

The Formation and Function of the Church
20 January 2012

TRAINING LEADERS IN THE CHURCH

The need for Church organization Exodus 18:13-24; Acts 6

Indications of a Leader

The Natural Leader - What an individual accomplishes, achieves or attains

The Spiritual Leader - What God is accomplishing through an individual

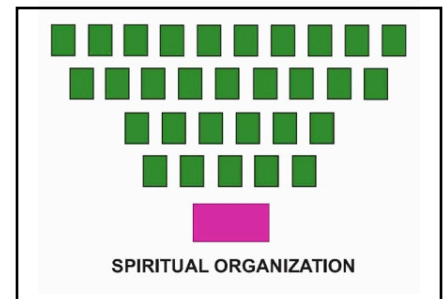
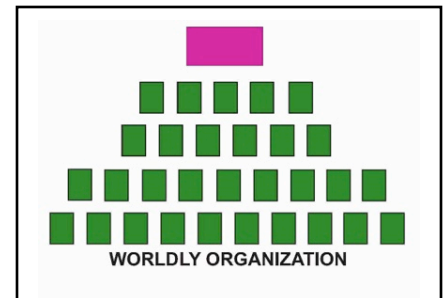
Disciple - Learner; Elder - Overseer; Deacon - Assistant

How do we build the 28 qualities from Lesson 10 into one another?

Study of the Word; Effectual Prayer; Mutual Accountability

“The first responsibility of a leader is to define reality. The last is to say thank you. In between the two, the leader must become a servant and a debtor.” Max Dupree

The Natural Leader	The Spiritual Leader
Visionary	Is given God’s vision
Has an action plan	Listens to God’s leading
Courage based on “guts”	Courage based on Faith
Energetic	Renewed from the Lord
Objective orientated	People orientated
Paternalistic - but on his terms	Is a “Coach”
Values self	Looks for value in others
Tolerates under achievers	Builds up others
Considers self indispensable	Places himself last



John 15:5 Dependency on Christ

John 13:12-16 Teach by example

1Sam 15:22 Avoid a presumptive faith

Ephesians 4:11-16 Facilitating the gifts in others

1 Thess 1:6-7 Mentoring/Coaching

Phil 3:17; 1 Pet 5:3

Leadership Is an Art, Max DuPree, Crown Publishing Group 2004

Spiritual Leadership, J. Oswald Sanders, Moody Press, 1967

Spiritual Leadership, Robert K. Greenleaf, Paulist Press, 2002